

Kamil Boc - Dagmar Vidrikova - Zoran Cekerevac - Jan Misik *

PROPOSAL FOR INCREASE OF BURGLAR RESISTANCE OF COMMERCIALY MANUFACTURED MOTOR VEHICLE DOORS

In many cases the level of personal protection especially during transportation by personal motor vehicles is dependent on burglar resistance of used car body materials. Currently commercially manufactured personal motor vehicles are modified by insertion of filler materials of high density (steel plates inserted into doors, steel reinforcements of vehicle floors). This approach causes not only increase in financial costs for procurement of such modified (armoured) vehicle, but also changes its driving characteristics. Particularly its financial cost affects its accessibility to wide public. Several cases of use of small firearms against the occupants of commercially manufactured personal motor vehicles have been investigated in recent years. The results of such attacks were casualties or grievous bodily harm. Considered materials were experimentally tested for the purpose of increasing burglar resistance mainly of commercially manufactured motor vehicle doors and increase of their burglar resistance against shots from small firearms. The result of experiments that were carried out was the recommendation for reinforcement of car body doors of personal motor vehicles using molten polycarbonate materials. The thickness of 24 mm resulted in such increase of door burglar resistance that used small firearm ammunition could not penetrate this barrier.

Keywords: Person and property protection, security, burglar resistance, bullet, ammunition, reinforced, personal motor vehicle, self-loading firearm.

1. Introduction

State of protection of persons and property level follows development of external and internal security environment in which they operate. An important indicator of security or risk level is criminality, especially the violent crime. Democratization of firearm ownership created relatively new phenomenon of security risk which until now correlated mainly with contracted attacks focused on lives and health of risk groups of persons (e.g. important political officials, members of the Government or Justice, ambassadors, members of criminal organizations, etc.). In recent period, relatives of risk group members, transporters of cash or valuables and ordinary citizens have also become targets of contracted violent attacks. Potential victims of assaults with weapon become most vulnerable mainly during transportation by motor vehicles. This status results from the nature of utilization of motor vehicle transportation. Potential victims are limited then not only by road infrastructure, but also by internal space of the vehicle which impedes their defense. Relying on passive protection elements of vehicles is possible only in vehicles in

which special modifications were carried out, enhancing their burglar resistance against attacks utilizing firearms. Vehicles reinforced, for example by armor, provide high level of protection to their crew. Commercially produced vehicles are reinforced [1]. These are able to maintain the original technical and driving characteristics after modification. High cost of said types of personal motor vehicles, as well as the modifications, significantly lowers their availability to wider public (average price of reinforced personal motor vehicle moves around 200 000 €). For this reason, the target customers of modified (armoured) vehicles are mainly politicians, ambassadors, entrepreneurs or bosses of criminal organizations. Other concerned groups of persons are insufficiently protected against attacks with firearms from the viewpoint of burglar resistance of commercially used vehicles.

2. Problem description

Currently most of providers of personal motor vehicles reinforcement prefer steel sheets which provide high level

* ¹Kamil Boc, ²Dagmar Vidrikova, ³Zoran Cekerevac, ⁴Jan Misik

¹Department of Security Management, Faculty of Security Engineering, University of Zilina, Slovakia

²Department of Technical Sciences and Informatics, Faculty of Security Engineering, University of Zilina, Slovakia

³Faculty of Business and Industrial Management, Union University Belgrade, Serbia

⁴Department of Security Management, Faculty of Security Engineering, University of Zilina, Slovakia

E-mail: Kamil.Boc@fbi.uniza.sk

Euronorm Standard For Security Glazing [6]

Table 1

Euronorm Standard For Security Glazing								
Class	Weapon	Calibre	Type	Weight (g)	Range (m)	Velocity (m/s)	Impact Energy	Shots
BR1	Handgun/Rifle	.22 LR	LB/RN	2,6 ± 0.1	10.00 ± 0.5	360 ± 10	170 J	3
BR2	Handgun	9x19mm Parabellum	FJ/RN/SC	8,0 ± 0.1	5.00 ± 0.5	400 ± 10	640 J	3
BR3	Handgun	.357 Magnum	FJ/CB/SC	10.2 ± 0.1	5.00 ± 0.5	430 ± 10	940 J	3
BR4	Handgun	.44 Magnum	FJ/FN/SC	15.6 ± 0.1	5.00 ± 0.5	440 ± 10	1510 J	3
BR5	Rifle	5.56x45mm NATO	FJ/PB/SCP	4,0 ± 0.1	10.00 ± 0.5	950 ± 10	1800 J	3
BR6	Rifle	7.62x51mm NATO	FJ/PB/SC	9.5 ± 0.1	10.00 ± 0.5	830 ± 10	3270 J	3
BR7	Rifle	7.62x51mm NATO	FJ/PB/HC	9.8 ± 0.1	10.00 ± 0.5	820 ± 10	3290 J	3

LB - Lead Bullet
RN - Round Nose
SC - Soft Core (lead)

FJ - Full Metal Jacket
CB - Cone Bullet
SCP - Soft Core (lead) & Steel Penetrator

FN - Flat Nose
PB - Pointed Bullet
HC - Hard core

of burglar resistance against effects of firearms due to their characteristics. Disadvantages of their use lie in increased mass of vehicle and related modification of its construction (necessary above limit modifications of motor unit, construction of vehicle, suspension setup, etc.). International ballistic standards (e. g., EN 1063 - Glass in building. Security glazing, Testing and classification of resistance against bullet attack, EN 1522 - Windows, doors, shutters and blinds. Bullet resistance. Requirements and classification, EN 1523 - Windows, doors, shutters and blinds. Bullet resistance. Test method, German ballistic standard DIN 52 290) are applied to increase burglar resistance of commercially produced vehicles. These norms set seven classes of vehicle resistance against attacks mounted by different types of weapons (Table 1) [2 - 5].

Burglar resistance of commercially produced personal motor vehicles available in Slovakia became object of our experimental examination within VEGA project No. 1/098/11 Model of Integrated Security System Optimization Framework for Protection of Specific Objects Realised by Means of Expert System. The goal was to ascertain level of burglar resistance especially of vehicle doors which belong to critical parts of chassis, and propose means for its improvement [7]. Criteria of the proposal were affordability of the proposed modifications, minimal interference with vehicle construction and maintaining of its mass to exclude negative change of its technical and driving characteristics (e. g. mass changes up to 65% of original vehicle mass after modification). A self-loading handgun was selected for the experiment according to ballistic standards. Its selection was based on availability and legality of its ownership. Dynamic

development of number of holders and registered weapons in SR in recent years was taken into account (Fig. 1) [8 and 9].

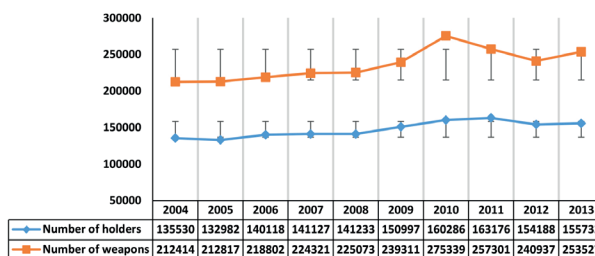


Fig. 1 Development of holders and registered weapons count in the Slovak Republic in the years 2004-2013 including standard deviation, trend line and reliability equation R^2 [10].

According to statements of experts from Police Force and firearm dealers, the prevailing interest of holders of firearm licences lies mainly in self-loading handguns.

3. Methodology of experiment

Input data necessary for performance of the experiment were acquired within the pilot project. During its performance, burglar resistance of chassis of commercially produced motor vehicles was tested, specifically the door of personal motor vehicle (hereinafter “test sample”) available at Slovak market. All accessories (glass, locking mechanism, electronics, etc.) were removed from the test sample before the main testing. Methods

of the examination within the pilot project, as well as the main experiment, were compliant with norm EN 1063 [2].

3.1 Pilot project

The pilot project was carried out in two stages. During the first stage, the burglar resistance of non-reinforced door was tested. During the second stage the door was reinforced by rock wool filling.

The test device consisted of a solid wooden frame on which the test sample (automobile door) was mounted. The mounting of test sample in frame:

- matches the standard car door mounting,
- distance from wall stopping the shots was 260 mm,
- distance from muzzle was 10 000 mm,
- height from ground level was 690 mm,
- perpendicular to the direction of shots,
- total target area was at minimum 440 mm x 440 mm,
- selection of necessary mounting pressure to ensure the door edges did not move during the test, but also not to cause tension which could influence the test results [2].

Fragments of the shots or sheet metal loose from the test sample were stopped by the wall placed behind the test sample.

The wall consisted of masonry blocks made of autoclaved aerated concrete (compliant with norm EN 771-4, category 1) [11] arranged in two rows, each four pieces high. The masonry blocks were set in distance of 260 mm from the test sample. Height of the wall for stopping of shots and their fragments was 996 mm, width from the front side 599 mm, width from the side 750 mm. The scattering of shots or sheet metal fragments was mapped by the control paper. Control paper consisted of white paper with density of 110 g/m². It was attached to the wall for stopping shots in vertical position, 320 mm behind the test sample. Its free surface was at least 440 mm x 440 mm, matching the target surface [3].

Ballistic testing device

Ballistic testing device was a self-loading firearm from Glock which belongs to the most widespread and most used types. Based on the selected type of weapon we focused on resistance class BR2. Technical parameters of used firearm and ammunition are listed in Table 2.

Rock wool Nobasil, type MPN of dimensions 1000 x 500 x 50.615 mm was used to reinforce the test sample. Process according to standard EN AW 6106 was followed for measuring metal sheet characteristics (Table 3) [12].

Technical parameters of used types of ammunition and weapon in pilot project [6]

Table 2

Brand	Glock	
Model	19	
Produced in	2006	
Calibre	9x19 mm	
Length (frame)	174 mm	
Height with magazine	127 mm	
Width	30 mm	
Barrel	Sight	153 mm
	Length	102 mm
	Profile	Clockwise
	Grooves	6
Magazine capacity	15	
Weight	no magazine	595 g
	empty magazine	70 g
	full magazine	225
Muzzle velocity V_0	350 ms ⁻¹	
Shot energy E_0	490 J	
Trigger travel distance	12.5 mm	
Trigger pull weight	2.0 kg	

Pilot project	9mm LUGER Magtech	9mm LUGER Lapua Cepp Super FMJ	RL 124 GRS FMJ	RL 124 GRS FMJ lead
Producer	Magtech	Lapua	Not listed	
Type	FMC	FMJ		
Material	case	CuZn (brass)		
	bullet	Lead core covered by metal jacket		
Shot weight	7.45g (115grs)	7.80g (120grs)	7.95g (124 grs)	9.83g (150 grs)
Primer	Boxer		Not listed	
Shot speed v_0	346 ms ⁻¹	360 ms ⁻¹	350 ms ⁻¹	
Shot energy E_0	446 J	506 J	487 J	602 J

Technical parameters of test sample metal sheet [6]

Table 3

Thickness (mm)	Width (mm)	Length (mm)	Weight (g)	Force (kN)	Rigidity (Nmm ²)	Length		Ductility (%)
						before	after	
.9	49	500	139.2	12.31	279.1	400	476	19

Calculation of impact kinetic energy E_d was based on following formula

$$E_d = \frac{1}{2} m_q \cdot v_d^2 \quad [J] \quad (1)$$

where v_d - impact speed of shot [ms⁻¹] and m_q - weight of shot [kg].

Mathematic model according to DeMarre was used for calculation of limit impact speed which applies to piercing of armour by armour-piercing shot [13]. It was assumed that all impact kinetic energy of the shot E_d should be consumed when piercing the sheet metal. Based on this assumption, the impact speed may be considered equal to limit speed ($v_d = v_{lim}$). For calculation of limit impact speed v_{lim} following empiric relationship was derived:

$$v_{lim} = K \cdot \frac{d^\alpha}{m_q^\beta} \cdot s^\gamma \quad [ms^{-1}] \quad (2)$$

where v_{lim} - limit impact speed of the shot [ms⁻¹], d - shot calibre [dm], m_q - shot weight [kg], K - penetration force constant and s - thickness of penetrated material [dm].

Based on shooting tests, several authors determined values of coefficients α , β , γ demonstrated in Table 4 [14 and 15].

Values of coefficients α , β , γ determined by experiments [6 and 16]

Table 4

Coefficient	α	β	γ
Euler	1.0	1/2	1/2
Noble	1/2	1/2	1.0
Krupp laboratory	5/6	1/2	1/3
DeMarre	.75	1/2	.7

Technical parameters of used ammunition [6]

Table 6

Main experiment	9mm LUGER ZVS	9mm LUGER Subsonic	9mm LUGER	Blazer 9mm LUGER
Producer	ZVS Holding	Sellier & Bellot ČR		FCC USA
Type	FMJ RN	FMJ	JHP	AL
Material	case	CuZn	CuZn 10	AL
	bullet	Lead core, full metal		Lead core, full metal
Bullet weight	7.45g (115grs)	9.70g (150grs)	7.50g (115grs)	7.45g (115grs)
Primer	Boxer, without Hg	Berdan 4.5mm		xxxx
Speed v_0	360 ms ⁻¹	305 ms ⁻¹	377 ms ⁻¹	349 ms ⁻¹
Energy E_0	518 J	451 J	533 J	454 J

Following formula in DeMarre's form was used for determination of shot penetration:

$$v_{lim} = K \cdot \frac{d^{0.75}}{m_q^{0.5}} \cdot s^{0.7\gamma} \quad [ms^{-1}] \quad (3)$$

Characteristics of the penetration of the test sample material are determined by penetration force constant K . Its value was set by the authors for purpose of this project empirically at $K=2400$. Calculation of values of impact kinetic energy and limit impact speed of used shots for overcoming the resistance of the sheet metal (penetration) are listed in Table 5.

Calculated values of impact kinetic energy and limit impact speed of used shots for penetrating the test sample during pilot project [6]

Table 5

Brand	E_d (J)	V_{lim} (ms ⁻¹)
MAGTECH	445.94	168.96
LAPUA CEPP SUPER	505.44	165.13
Reloaded RL 124 GRS	486.93	163.56

3.2 Main experiment

Main experiment followed upon the results of the pilot project. Its goal was to verify the burglar resistance of test sample which was reinforced by cast polycarbonate. Testing device was similar to the one used in the pilot project. Ballistic testing device was replaced by handheld self-reloading Glock, model 19, made in 2012. Relevant technical parameters are similar to the technical parameters of weapon listed in Table 2. For the purpose of reaching higher penetration of the shot, 4 types of ammunition were used. Their technical parameters are listed in Table 6. The shooting distance was decreased to 5 m [17].

Cast polycarbonate of 4 mm thickness was used for reinforcement of the test sample. Reinforcement of the test sample was done by connecting six polycarbonate boards of dimensions 510 mm x 510 mm x 24 mm. Impact kinetic energy of shot E_d was calculated according to equation (1). For calculation of limit impact speed of shot v_{lim} , calculation according to equation (2) was used. To determine the penetration force of shot, the formula in DeMarre's form was applied. Calculation of values of kinetic energy and limit impact speed of used shots for overcoming of sheet metal resistance is listed in Table 7 [17].

Calculation of values of impact kinetic energy and limit impact speed of used shots for penetration of reinforced test sample [6] Table 7

Brand	$E_d (J)$	$V_{lim} (ms^{-1})$
9mm LUGER ZVS	482.76	1666.05
9mm LUGER Subsonic	451.17	1513.03
9mm LUGER	532.98	1346.37
Blazer 9mm LUGER	453.71	1726.45

The theoretical results imply that the limit impact speed necessary for penetration of the reinforced test sample (of thickness $s = 0.249 dm$) is several times higher than the muzzle velocity V_0 of used ammunition.

4. Results of experimental testing

Results of burglar resistance (with and without reinforcement by rock wool) which were measured by perpendicular shooting of the test sample from 10 m by different types of ammunition within the pilot project are listed in Table 8 [6].

Using rock wool, no verifiable or relevant results were acquired which could be utilized to increase burglar resistance of the test sample. For this purpose, the reinforcement was resolved using a set of six 24mm thick polycarbonate boards within the main experiment. During the main experiment a shortening of distance between the muzzle and test sample in direction of shot to 5m occurred. Measured results are listed in Table 9.

Results of burglar resistance (with and without reinforcement by rock wool) measured by perpendicular shooting of test sample within pilot project [6] Table 8

Ammunition	Distance (mm)	Depth of penetration in wall stopping the shots (depth + length of bullet)		
		Shot into test sample		Difference
		not reinforced	reinforced	
				(mm)
RL 124 GRS FMJ	10 ⁴	107.743	162.369	54.626
Lapua Cepp		104.104	138.629	34.525
RL 124 GRS FMJ lead		89.755	18.717	-71.038
Magtech		164.103	75.817	-88.286

Results of burglar resistance after reinforcement of test sample by set of 24mm thick polycarbonate boards [6] Table 9

Ammunition	Distance (mm)	Depth of penetration channel in polycarbonate board (mm)
9mm LUGER ZVS	5.10 ³	13.4
9mm LUGER Subsonic		7.5
9mm LUGER		13.6
Blazer 9mm LUGER		penetration

Table 9 implies that the polycarbonate boards reinforced the test sample and prevented its penetration by all bullets except Blazer 9mm LUGER which was able to penetrate it. Mathematical model was ineffective in this case. The reason of penetration is presumably the composition of shot core. Figure 2 displays the shot in polycarbonate board. Bullet Sellier&Bellot 9mm Luger Subsonic penetrated only the first layer. The second layer was disrupted, but all other four layers remained almost intact.

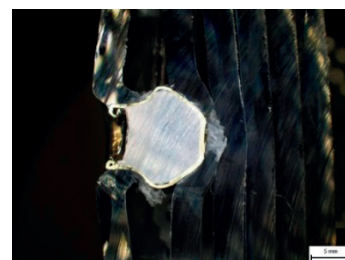


Fig.2 Cross-section of bullet in polycarbonate board [6]

5. Conclusion

The experiment performed with a set of 24mm thick polycarbonate boards proved significant increase of burglar resistance of the examined parts of chassis in a commercially produced personal motor vehicle (door). Only in one case, when using Blazer 9mm LUGER bullet, penetration occurred.

These bullets are characteristic by their high penetration force. Further reinforcement is possible by adding another 4mm thick polycarbonate board. For the purpose of passive protection of the motor vehicle crew it is not necessary to use material from armored boards, but also other materials, such as polycarbonate board can be used. Financial costs of both polycarbonate boards

and of technical modifications of a vehicle are significantly lower than the previous costs of armor reinforcement. In the next period, possibilities of increasing burglar resistance of motor vehicles using ceramic materials and carbon fabrics shall be experimentally verified.

References

- [1] PLANKA, B. et al.: *Criminalistic Ballistics*, Prague: Ales Cenek, 2009, 672 p., ISBN: 9788073800369.
- [2] BS EN 1063:2000 - *Glass in Building. Security Glazing. Testing and Classification of Resistance Against Bullet Attack*. BSI, 2000.
- [3] BS EN 1522:1999 - *Windows, Doors, Shutters and Blinds. Bullet resistance. Requirements and Classification*, BSI, 1999.
- [4] STN EN 1523 - *Windows, Doors, Shutters and Blinds. Bullet Resistance. Test Method (in Slovak)*, 2000.
- [5] *German DIN ballistic standard*. German: DIN 52 290 - Part 2, Nov. 1988.
- [6] Own experiment: *Exploration Burglar Resistance of Extracted Elements of Motor Vehicles*, 2012 - 2014.
- [7] VEGA project No. 1/098/11 *Model of Integrated Security System Optimization Framework for Protection of Specific Objects Realised by Means of Expert System*.
- [8] MARTINCOVA, P., GRONDZAK, K., VACLAVKOVA, M.: *Information System for Security Evaluation - Design and Implementation (in Slovak)*, Proc. of intern. conference on technics, technologies and education ICTTE 2013: October, 2013, Yambol, ISSN 1314-9474. - [S.l: s.n], 2013, pp. 251-256.
- [9] KITTEL, L., LOVECEK, T.: *Passive Protection Elements Breach Resistance Modeling*, *Communications - Scientific Letters of the University of Zilina*, vol. 13, No. 2, 2011, pp. 53-58, ISSN 1335-4205.
- [10] Ministry of Interior of the Slovak Republic, Number of registred weapons in the Slovak Republic, [on-line] <http://www.minv.sk/?statisticke-prehlady-evidencie-zbrani>.
- [11] STN EN 771-4 - *Specification for Masonry Units. Part 4: Autoclaved Aerated Concrete Masonry Units (AAC)*, 2013.
- [12] EN AW 6106/ISO: *Al MgSiMn. Aluminium and Aluminium Alloys - Chemical Composition and Form of wrought Products - Part 3: Chemical Composition*; German version EN 573-3:1994.
- [13] JURICEK, L., NOVOTNY, P.: *Modeling of Small Arm Projectile Penetration Through a Steel Plate (in Czech)*. *Vojenske zdravotnicke listy*, vol. LXXIII, No. 1, 2004, ISSN 0372-7025.
- [14] HALLQUIST, J., LS-DYNA: *Keyword User's Manual. Nonlinear Dynamic Analyses of Structures. Livermore Software Technology Corporation*, digital manual, May, 1999.
- [15] IMAOKA, S.: *Implicit vs. Explicit Dynamics*. ANSYS, Inc. on 6.28.2001. www.ansys.net/tnt_sheldon13.htm.
- [16] SELLIER, K., KNEUBUHL, B.: *Wundballistik und ihre ballistischen Grundlagen. 2. vollig uberarbeitete und erganzte Auflage*. Berlin: Springer-Verlag, 2001, 526 p., ISBN 3-540-66604-4.
- [17] MRAZ, J.: *Practical Research for Design of Passenger Car's Body Increased Resilience (in Slovak)*. Diplomova praca, 2014, p. 91, odborný konzultant: Kamil Boc.